


bluelab®
success by simplicity

The Grow Book

Better plants,
better hydroponics,
in the palm of your hand.

bluelab.com





A solution for every problem.

Measuring the balance of health and life...

BlueLab® has been dedicated to helping the hydroponic industry manage crop health and productivity easily and effectively for over 30 years.

The Grow Book provides information on the essentials for plant growth. This information, combined with our world leading water-based measuring systems, will ensure you obtain optimum plant growth and health.

Grow your understanding...

So you can grow better plants

When you're growing plants for food, for reliable beauty, for business, you need to understand their growing environment.

When you understand that environment, you can manage it.

With hydroponics, you can do both with the greatest possible certainty.

It's about knowledge

Such as the strength of your nutrient solution, and knowing that nutritional elements are actually available to the plants. They're areas where accuracy matters, and simplicity too.

That's where Bluelab comes in

We help you know the things you absolutely have to know to grow strong, healthy, reliable plants. It's what our testing products are for.

They make knowing the essentials easy - so you can have better plants, and a better and growing horticulture business.



Contents:

Healthy plants don't just happen	5
The basics of plant nutrition	7
Measuring pH matters	11
Measuring pH in soils	15
Conductivity	17
Temperature	21
pH measuring instruments	23
Look after your pH probes	25
Conductivity measuring instruments	29
Look after your instruments	31
Knowledge base	33

Healthy plants don't just happen

They need safe, suitable environments

Welcome.

Meet BlueLab's customer support.

Our Grow Book will take you through some of the essentials for healthy plant growth.

In particular, we'll focus on adequate plant nutrition. We'll go over some of the key factors that affect food uptake. And we'll show you how to manage them.

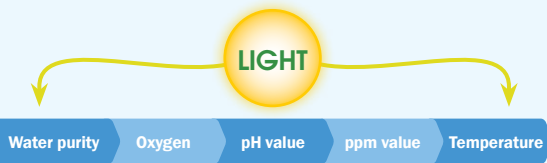
But first things first. We need to keep in mind that plants, like all living things, respond to their environments for good or for bad. A good environment breeds a healthy plant. A bad environment breeds an unhealthy plant, or can kill the plant.

You likely know the basic plant life system. But let's refresh. Through its leaves, a plant takes in light and carbon-dioxide (CO₂) from the atmosphere. Through its roots, it takes in water and nutrient from the soil or growing environment. It converts light and CO₂ into sugar, and releases oxygen (O₂). The plant then uses these sugars, the water and nutrients for its growth.

no ifs or buts

Hydroponic growing lets you give the best care possible to your plants.

The quality of care is in your control. And these are the most important factors you need to know:



It sounds simple. And it is. Like all natural processes, it's a very elegant system, refined by nature over millions of years.

Hydroponics is the first choice when you want the most control possible over plant growth. That control depends on knowing as much as possible about the growing environment. It's why we need accurate measuring systems. They tell us when things are going well, and when they're turning for the worse.

First, we measure what's happening in the growing environment. Then we can make sure we keep growing conditions superb.

We can, in other words, add our knowledge and skills to nature.

factfile

Keep your eye on the overall environment and your plants together.

When you're managing the growing system as a whole, watching these six key factors and responding as needed, you'll have a successful crop.

The key factors to manage:

› Environment

Temperature range; humidity range; clean air, proper CO₂/oxygen ratio, adequate air circulation; light – sunlight or plant lamps; support.

› Food

Nutrients.

› Temperature

Environment and nutrient solution.

› Water

Quality and drainage.

› pH level

Allows absorption of essential elements.

› Adverse influences

Insect and disease control.

vascular system

Water and nutrient conducting tissue throughout the plant ensure that all parts of the plant get the water and nutrition they need to grow.

Shoot system

Above ground parts of the plant:

- › leaves trap energy from sunlight and carbon dioxide from the air to create “food” (photosynthesis)
- › leaves release oxygen into the air (respiration)
- › stems provide structure and position leaves so they can collect sunlight
- › buds produce new plants or plant parts
- › flowers or cones produce seeds from which new plants can grow.

flower

leaf

fibrous root

bud

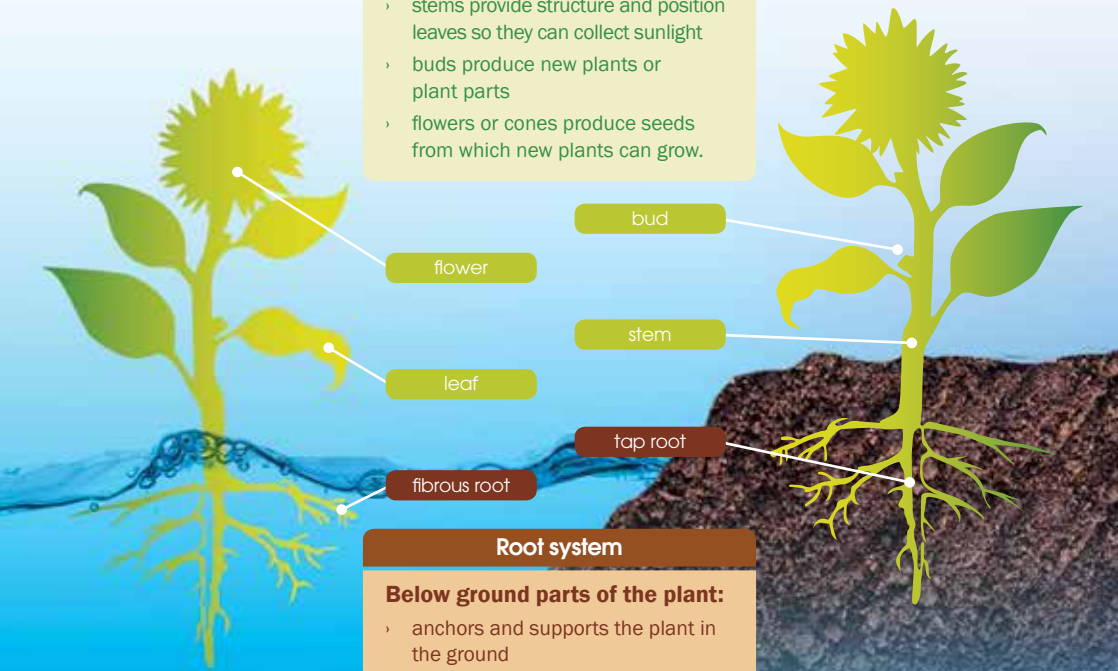
stem

tap root

Root system

Below ground parts of the plant:

- › anchors and supports the plant in the ground
- › fibrous roots absorb water and nutrients from the soil
- › taproots store “food” created during photosynthesis
- › may produce new plants from root buds.



The basics of plant nutrition

Facts to plant in your mind

It sounds obvious, and it is.
Plants eat.

They get their nutrition from minerals. But they can only get all the minerals they need if certain conditions are right.

These two facts are at the heart of plant management.

Plants take in minerals as ions - through their roots, dissolved in water. Think dissolved pills.

What matters is creating the best nutrient environment. Just adding nutrients isn't enough. In fact, adding nutrients without understanding the consequences can be disastrous. You need to understand – and manage – a number of key factors.

Your growing environment could be awash with nutrients. But whether the plants can get the food they need isn't simple. The ions could be readily available. Or they could be tied up with other elements. Or tied up in the solution itself.

A key thing that affects food uptake is whether your solution is acid or alkaline. We measure this in pH.

no ifs or buts

First... get the food mix right.

Then... make sure your plants can take the food in.

Think!

- ✓ The right food
- ✓ In the right amount
- ✓ In the right growing environment

factfile

Essential minerals

Plants need most, if not all, of at least 16 different elements for optimum growth and health.

Three essential elements from air and water:

Carbon (C), hydrogen (H), and oxygen (O).

Six macro-nutrients:

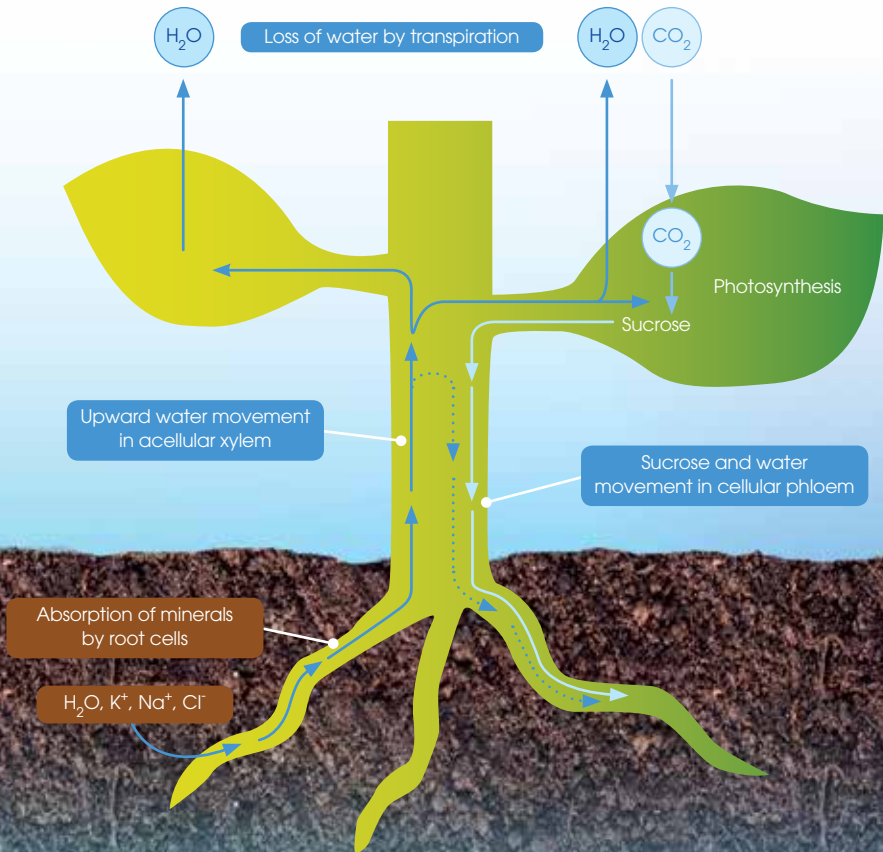
Nitrogen (N), phosphorus (P), potassium (K), calcium (Ca), magnesium (Mg) and sulfur (S). These are required in large amounts.

Other minerals, called micro-nutrients:

These are only required in trace amounts - boron (B), chlorine (Cl), copper (Cu), iron (Fe), manganese (Mn), sodium (Na), zinc (Zn), molybdenum (Mo), nickel (Ni), silicon (Si), and cobalt (Co). The last two mentioned - silicon and cobalt - aren't needed by all plants, but they are essential to some.

transpiration

The plant absorbs water by the roots, any water that isn't used to help it grow is released via cells in the leaves.



The basics of plant nutrition

Facts to plant in your mind

Hydroponic food

Wherever you are in the world, some soils lack certain elements. Or the elements may be present but not in forms that will allow the plant to absorb them. So, left to their own, plants will display deficiencies.

It's where hydroponics comes into its own. It's why plants grown hydroponically show rapid, strong, healthy growth. With hydroponics, you can make sure plant nutrients are always available in the right proportions. You manage and measure the nutrients you supply to your plants.

For a start, of course, you're using a soil-less growing medium. When you can add micro- and macro-nutrients as liquid as needed throughout crop life, you can increase your control over the crop. You can easily adjust nutrient levels, compensating for any environmental factors you meet.

no ifs or buts

You need to know the strength of your nutrient solution - and accurately.

It can be too strong in nutrients... or too weak in nutrients.

Too strong, and you're overfeeding. Elements can become unavailable, plant tissue can become damaged. Plants go into severe stress, become susceptible to pathogens, and they can die.

Too weak, you're underfeeding. The results are nutrient deficiencies, poor growth, poor bloom.

So how do you manage food strength? It doesn't have to be difficult.

Sure, there are all sorts of meters, monitors, feed charts, calibration fluids, etc. Don't let them scare you. Plants can stand a fair amount of stress and still produce well. But if you're prepared to learn what's necessary, you'll get consistently good results. Learn first. Don't try to fix afterwards.

While we're talking about plant care, let's mention insects and diseases. It's best to stop them getting a foothold. Be proactive. The number one thing is keep the grow area and all your equipment clean, and clean up between crops. They're the best ways to avoid common plant diseases. It's simple. Healthy plants are better at avoiding disease than stressed-out ones.

factfile

Understanding mineral uptake

Several things affect the uptake of mineral ions. Uptake is dependent on weather conditions, the cation exchange capacity or CEC, the pH of the growing medium and water supply, as well as the total alkalinity of the irrigation water. pH is a big one. We'll deal with pH in detail in the following pages.

CEC (Cation Exchange Capacity) means the ability of the growing medium to hold exchangeable mineral elements within its structure. These cations include ammonium (nitrogen), potassium, calcium, magnesium, iron, manganese, zinc, and copper.

Mineral uptake affects enzymes too. And these are important.

These are proteins involved in increasing the rate and efficiency of biochemical reactions. Most require metal ions for activation and function. Without correct enzyme function, growth in an organism would stop.

Measuring pH matters

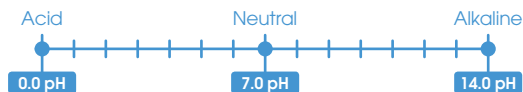
It tells you whether plants can get at the food

It tells you whether plants can get at the food

There are two things to get a grip of here. And pH is the clue to both.

Your nutrient solution will either be more acid or more alkaline. Measuring the pH tells you exactly which.

pH is the measurement of acidity and its opposite, alkalinity, in a solution. Neutral pH is 7.0 pH. Acidity measures below seven pH (7.0 pH). Alkalinity measures above seven pH (7.0 pH).



So if the nutrient solution is high in pH it's alkaline. Low in pH, it's acidic.

You need to maintain your hydroponic nutrient solution at a pH level where the elements in the nutrient solution are consistently available to the plant.

If the solution is too acidic or too alkaline it can cause 'lock up', meaning certain elements essential for growth can't be absorbed by the root structure.

'Lock up' can also cause the following:

- › Slow growth
- › Leaf, flower and fruit drop
- › Leaf discolouration
- › Root burn
- › Upsetting the chemical balance of the nutrient solution
- › Pests and diseases entering your growing system
- › Crop failure
- › Death

There's not a lot to understand. But you need to get hold of it.

no ifs or buts

You need to master pH.

Most nutrient elements are available to a plant when the pH is slightly acidic.

Recommended pH range for plants grown in:



can be plant specific

Individual crops have their own preference for pH values. That is, they do best at certain pH levels. You need to know what these are.

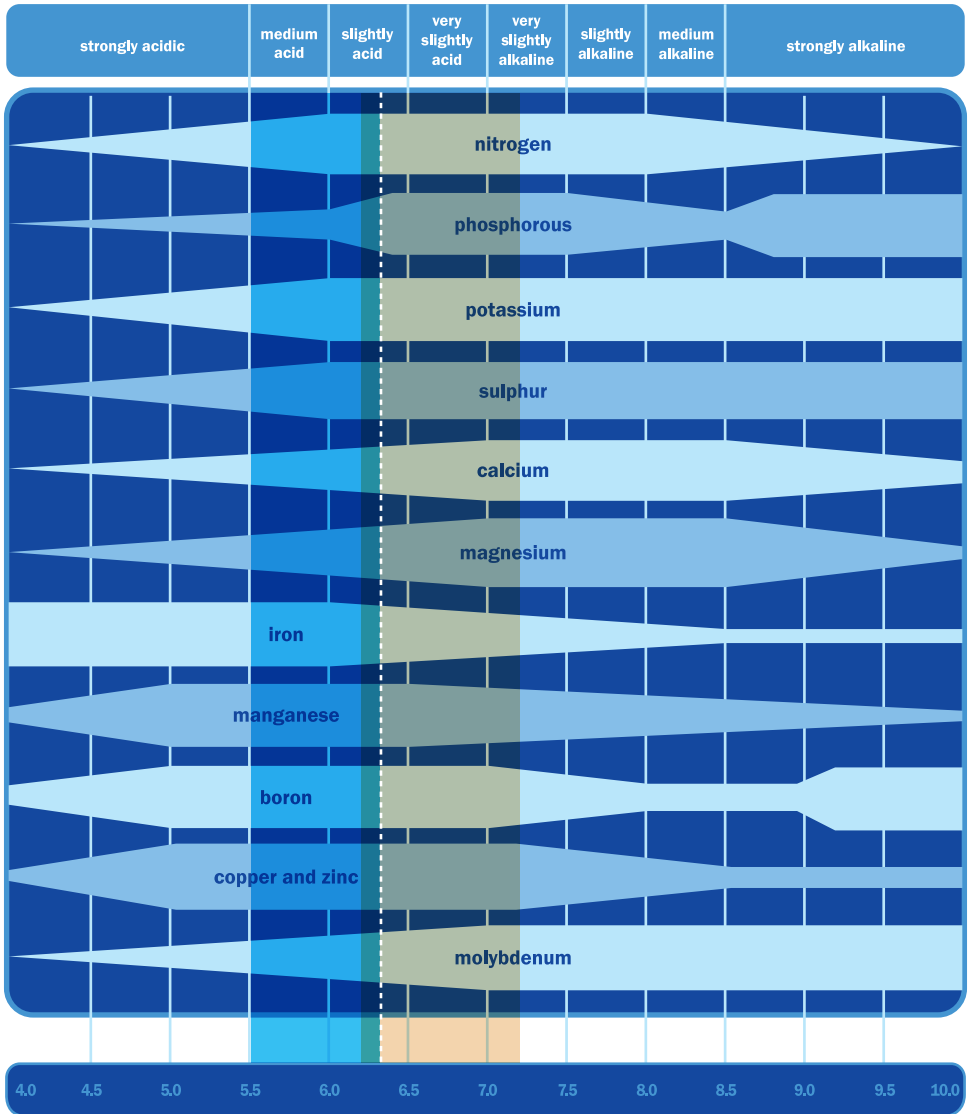
Whatever food solution you use, keep your pH in a fairly tight band. Consistent balance gives consistent growth.

It's not just the nutrient mix. It's the right pH that delivers the food.

Think of nutrients like a lock. pH is the key.

How nutrient pH affects availability of plant nutrients

the width of the bands indicates the relative availability of each plant food element at various pH levels



Measuring pH matters

It tells you whether plants can get at the food

The pH measuring scale

We measure pH the same way worldwide.

The scale runs from 0.0 – 14.0 pH.

7.0 pH is the middle or neutral point. That's the middle between high acid and high alkaline.

Less than 7 = increasingly acidic, down towards 1.

More than 7 = increasingly alkaline up towards 14.

What changes pH levels in hydroponics?

Three main things:

- 1. Water. Most water.** Except rainwater, tends to be slightly alkali. The carbonates in it work to neutralize the slightly acidic water in your reservoir. So as you add fresh top-up water to your tank, the pH value will rise.
- 2. The plants themselves.** If you're growing in high light conditions, the pH value will rise. If you're growing in low light conditions, the pH value may fall.
- 3. Your nutrient.** Nutrient stock solution is usually slightly acidic.

Using the pH scale

It's much quicker in hydroponics, because your plant food is in liquid form.

A practical example. If your pH is too high, your plants won't be able to get the iron they need. Your food mix might have an ideal amount of iron – but the plants may not be able to absorb it. With iron deficiency, leaves will yellow and weaken. Measuring pH for soil crops can be tricky. We will touch on this shortly.

factfile

When the pH goes higher or lower some of the compounds in the nutrient can be altered or 'de-natured'

Minerals are compounds of atoms.

This means the acid or alkali can snap the atomic bonds. This lets the free ions re-combine with other atoms to create new compounds. These might be insoluble or unusable by the plant. Meaning, they can't get the food they need.

no ifs or buts

Keep the pH balance healthy

Most plants like pH less than 7.0. An average pH for crops is 6.3. This means the solution is slightly acidic.

A measure from 5.5 to 6.3 is usual for solution.

This gives the greatest availability of all essential plant nutrients.

Remember, the measure is a compromise. The minerals are all different atomic compounds. So they're best available at their different, individual pH values.

factfile

The science of pH

Let's dig deeper.

We know pH refers to the potential hydrogen-hydroxyl ion content (alkalinity or acidity) of a growing medium or water solution. This solution consists of mineral elements dissolved in ionic form in water. We know that salts in solution ionize into positive and negative ions.

And that's the clue to pH.

The pH scale tells us how strongly the electrical charges hold the atoms and molecules of substances together. When there are more hydrogen (H+) (positive) ions the solution will be acidic (pH less than 7.0). If there are more hydroxyl (-OH) (negative) ions, the solution will be alkaline (pH greater than 7.0). An exact balance of hydrogen and hydroxyl ions results in a pH neutral soil (pH=7.0) or pure (pH neutral) water.

In practical terms, as we emphasize, what matters is whether your solution is acid, neutral or alkaline.

This is what affects the availability of mineral elements to plant roots.

The pH measure won't stay the same over time. And slight variations are normal - say from 5.8 to 6.5 over a few days.

But watch for big swings. They may mean danger. Extreme variations can cause mineral deficiencies. Or they can mean toxicity - by binding or releasing large amounts of various elements. Big pH swings may also mean you have unwelcome microbes living in your solution. These are pesky little things. They can change the pH to suit themselves. Deal with them by adding beneficial microbes into your solution and root zone. These typically help plants grow bigger, stronger, with better roots, and they protect the roots from bad microbes and environmental stress.

no ifs or buts

Keep your pH probe alive

We go over this in detail later. But it's worth saying now. Loud and clear. pH probes don't last forever. Their life depends on:

- › The number of readings you take.
- › Contamination from the type of solution you are measuring.
- › Different temperatures of the solutions.
- › Age of the probe.
- › If it has ever dried out.

You can extend their life with a couple of simple habits:

- › Keep your probe clean. Always rinse it after use, with fresh running water.
- › Keep your probe glassware wet. Always replace the storage cap after use. Ensure the cap contains quality KCl storage solution so the probe tip is submerged.

Remember: If it dries, it dies!

Check page 26 for all you need to know to care for your pH probe.

Adjusting the pH in your reservoir

Take extra care here.

Phosphoric acid (used to lower pH), and potassium hydroxide (used to raise pH), can burn. Unless you're very experienced, you should also avoid using nitric acid and sulphuric acid.

For safety, we recommend using adjuster solutions. They're readily available. Before adding them, always pre-dilute them to a concentration of below 1% or 2% at the most.

Measuring pH matters

In soils too!

Measuring the pH of soil and soil solutions

pH is equally important if you're growing in soils or other growing media.

Just as in hydroponics, pH strongly influences the availability of nutrients and the presence of micro-organisms and other plants in the soil.

Certain plants require a particular pH range for the required nutrients to be consistently available. Low soil pH causes aluminum and manganese toxicity in plants and reduces the availability of soil phosphorus. High soil pH also reduces soil phosphorus availability and reduces micro-nutrients such as zinc and boron to plants.

In the past, you either presumed the pH of the soil or substrate was OK, or you sent a sample to a laboratory for testing. Fortunately, you can now get pH meters with probes made for direct use in soils.

no ifs or buts

Measuring pH in soils is not an exact science

The recommended pH range for soil crops is 6.2 - 7.2, but this is crop specific.

It's always going to be indicative rather than absolute. The key factors are:

Soil type

Growth stage of the plant. It's useful if you've recorded pH levels through the growing cycle, and have some history to go on.

Applications and types of fertilizers

These can alter the pH significantly. Some fertilizers can make your pH level head in a direction you don't want.

Applications of sprays

These can soak into the soil or growing media and change your pH.

Soil/media temperature

Soils with high temperatures can have a high concentration of carbon dioxide (CO₂). High concentrations of CO₂ lead to more carbonic acid, which lowers pH.

factfile

What influences pH levels and pH readings in soils?

Moisture level/raw water.

If the sample you want to measure is dry, moisten it with distilled water. Don't use tap water. This can influence the pH reading based on the tap water pH value.

Calibration of the pH meter and cleanliness of the probe tip.

For accurate readings, calibrate the meter at least once a month or every 30 readings. Keep the probe clean and, after use, always rinse with water. Store the probe tip in a quality KCl storage solution to keep the probe tip wet.

Sample selection.

For field testing, take your samples some 20 cm or 8 inches down in the substrate and from various areas. Then take an average of your readings.

For container-grown plants, you're best to check the pH level of the substrate before planting.



Bluelab pH Pen

Bluelab Soil pH Pen
with built in pH probe &
removable storage cap/auger



Bluelab pH Meter
with replaceable pH probe

Recommended pH for plants

Vegetables		House plants	
Artichoke	6.5 - 7.5	Abutilon	5.5 - 6.5
Asparagus	6.0 - 8.0	African Violet	6.0 - 7.0
Barley	6.0 - 7.0	Anthurium	5.0 - 6.0
Bean	6.0 - 7.5	Araucaria	5.0 - 6.0
Broccoli	6.0 - 7.0	Azalea	4.5 - 6.0
Brussels sprouts	6.0 - 7.5	Begonia	5.5 - 7.5
Cabbage	6.0 - 7.5	Camellia	4.5 - 5.5
Carrot	5.5 - 7.0	Croton	5.0 - 6.0
Cauliflower	5.5 - 7.5	Cyclamen	6.0 - 7.0
Celery	6.0 - 7.0	Dieffenbachia	5.0 - 6.0
Chicory	5.0 - 6.5	Dracaena	5.0 - 6.0
Chinese cabbage	6.0 - 7.5	Gardenia	5.0 - 6.0
Corn	5.5 - 7.0	Geranium	5.0 - 6.0
Cress	6.0 - 7.0	Hibiscus	6.0 - 8.0
Cucumber	5.5 - 7.5	Jasmine	5.5 - 7.0
Egg plant	5.5 - 7.0	Kalanchoe	6.0 - 7.5
Lettuce	6.0 - 7.0	Mimosa	5.0 - 7.0
Maize	6.0 - 7.5	Orchid	4.5 - 5.5
Melon	5.5 - 6.5	Palms	6.0 - 7.5
Mushroom	6.5 - 7.5	Peperomia	5.0 - 6.0
Oat	6.0 - 7.0	Philodendron	5.0 - 6.0
Onion	6.0 - 7.0	Yucca	6.0 - 7.5
Pea	6.0 - 7.5	Lawn	
Pepper	6.0 - 7.0	Lawn	6.0 - 7.5
Potato	4.5 - 6.0	Fruit	
Sweet Potato	5.5 - 6.0	Apple	5.0 - 6.5
Pumpkin	5.5 - 7.5	Apricot	6.0 - 7.0
Rice	5.0 - 6.5	Cherry	6.0 - 7.5
Shallot	5.5 - 7.0	Grapefruit	6.0 - 7.5
Soybean	5.5 - 6.5	Grapes	6.0 - 7.0
Spinach	6.0 - 7.5	Lemon	6.0 - 7.0
Strawberry	5.0 - 7.5	Nectarine	6.0 - 7.5
Sugar bett	6.0 - 7.0	Orange	5.0 - 7.0
Sunflower	6.0 - 7.5	Peach	6.0 - 7.5
Tomato	5.5 - 6.5	Pear	6.0 - 7.5
Watercress	5.8 - 8.0	Plum	6.0 - 7.5
Watermelon	5.5 - 6.5	Pomegranate	5.5 - 6.5
		Walnut	6.0 - 8.0

Conductivity

Tells you how much food is in your solution

Why measure conductivity?

To feed plants well, we have to know what we're feeding them. And, as we saw in pH, we have to know if they can get at the food.

But we also have to know how much food they have available. That's where conductivity comes in.

Measuring conductivity gives an accurate measure of the nutrients in a solution. So understanding conductivity takes the guesswork out of feeding plants. It'll also save you money.

Why conductivity? Easy. Pure or distilled water does not contain salt, so has no electrical conductivity. It has no food in it for plants. They need minerals. And when you add minerals, you create electrical conductivity. The dissolved salts in water allow it to conduct electricity.

The more mineral salts you add, the more you increase conductivity. So measuring conductivity tells you how much nutrient there is in the water base.

As we saw, there's one worldwide scale for measuring pH. But there are several scales for measuring conductivity.

Getting a grip on the different measuring scales

All these scales measure the concentration of dissolved solids in a solution. They just use different processes and scales to do so.

EC is the only absolute measure of conductivity for nutrient solutions. EC is measured in millisiemens (mS/cm^2). It's the standard everywhere outside North America. It also gives the most accurate conductivity measure. This is because different tester manufacturers use different standards to convert from EC to ppm - often resulting in inaccurate and confusing ppm readings. *Use our conversion chart on page 17.*

CF is closely related to EC. It just doesn't have the decimal point.

ppm 500 / TDS and ppm 700 can only be accurately measured by chemical analysis. Most ppm meters measure in EC then convert this to a ppm value.

factfile

Different conductivity measures

You've probably met with all or some of these terms:

EC

Electrical Conductivity

mS/cm^2

millisiemens per cm^2

ppm

parts per million

TDS

Total Dissolved Solids

(or DS - Dissolved Salts, or MS - Measured Salts)

CF

Conductivity Factor

They're all related. They're concerned with measuring the same thing. EC, mS/cm^2 , PPM and TDS can all be converted from one to the other.

What affects nutrient levels?

A number of things. As water evaporates, a nutrient solution becomes more concentrated.

On a hot day, plants will take up more water than nutrients - so the nutrient level, or conductivity, will rise. Fast-growing plants need anywhere from 1.0 - 4.0 EC of nutrient in the water. If salt levels get too high, the internal osmotic system will reverse and the plants will dehydrate.

A diluted nutrient solution is common in hydroponics. The reason's obvious. Plants growing in moderate temperatures can fairly quickly use up the food in their nutrient solution. To keep the nutrients at optimal levels for growth or flowering, test every day.

Remember too, it's important to change the nutrient solution regularly. Plants discard wastes into the nutrient solution. You don't want these wastes to build up.

Conversion chart

mS/cm ² Millisiemen per cm ²	EC	CF	ppm 500 TDS	ppm 700
0.1	0.1	1	50	70
0.2	0.2	2	100	140
0.3	0.3	3	150	210
0.4	0.4	4	200	280
0.5	0.5	5	250	350
0.6	0.6	6	300	420
0.7	0.7	7	350	490
0.8	0.8	8	400	560
0.9	0.9	9	450	630
1.0	1.0	10	500	700
1.1	1.1	11	550	770
1.2	1.2	12	600	840
1.3	1.3	13	650	910
1.4	1.4	14	700	980
1.5	1.5	15	750	1050
1.6	1.6	16	800	1120
1.7	1.7	17	850	1190
1.8	1.8	18	900	1260
1.9	1.9	19	950	1330
2.0	2.0	20	1000	1400
2.1	2.1	21	1050	1470
2.2	2.2	22	1100	1540
2.3	2.3	23	1150	1610
2.4	2.4	24	1200	1680
2.5	2.5	25	1250	1750
2.6	2.6	26	1300	1820
2.7	2.7	27	1350	1890
2.8	2.8	28	1400	1960
2.9	2.9	29	1450	2030
3.0	3.0	30	1500	2100
3.1	3.1	31	1550	2170
3.2	3.2	32	1600	2240
3.3	3.3	33	1650	2310
3.4	3.4	34	1700	2380
3.5	3.5	35	1750	2450
3.6	3.6	36	1800	2520

no ifs or buts

Manage your water quality

Test your raw water with an EC/CF meter before you add anything to it. Where possible use RO water (Reverse Osmosis).

This has four major benefits:

1. Lower overall EC/CF. Meaning more room for nutrients and additives.
2. Is pH neutral.
3. Reverse osmosis removes chlorine and chloramines. It removes the potential for tap water to damage beneficial microbes.
4. You avoid other pollutants and contaminants. You don't want these getting in from the water supply.

Remember, keep the water moving to keep its oxygen content up. And manage your water temperature - detailed in the next section.

NOTE: If you don't have RO water and need to use raw water, measure the conductivity prior to mixing in your nutrient stock solution and include the conductivity reading of the raw water in the overall required conductivity.

Conductivity

Tells you how much food is in your solution

Measuring and changing your solution

Let's emphasize a useful warning.

If you don't change the entire solution at least every 10 days, and if you only top up when necessary, you risk toxic levels of certain elemental salts or metals. The amount of nutrient in the solution may be correct, but you won't know the amount of each elemental salt or metal. The result? Your plants may not have all the elements they need.

If you're growing plants in pots - in soil or soil-less mixes - there's an easy way to maintain the proper EC level. Water the plant so that a third of the solution drains out the bottom. This will wash away any salts or metals left behind from past waterings. Even with premium nutrients, use pH-balanced water every third watering.

Be aware that an EC/CF meter can't distinguish individual minerals. It can't tell you exactly which elemental salts or metals are low, or which are too high. Some ingredients, such as urea and the chelates, won't register at all as they don't conduct electricity. You need very expensive equipment or a lab to give you these answers. It comes back to proactive management of your nutrient mix.

Think oxygen too. Fish need it in water. So do plants. The roots absorb oxygen and use it to fight anaerobic bacteria such as phytophthora root rot, and fungi such as rhizoctonia root rot. Keep your water moving. Let it travel against the air. It'll pick up oxygen as it flows.

Think there's been a spike in your nutrient levels? Empty the reservoir and fill it with a clearing solution. Clearing solutions also latch onto salts in the plants, and draw the salts out. They can save a crop from toxicity.

no ifs or buts

Measure the conductivity every day

- › Avoid over-diluting or over-concentrating your nutrient solution.
- › Start with a quality nutrient.
- › Completely change the reservoir solution every seven days.
- › Top up the nutrient level between changes - so your plants always have the right amount of food.



Bluelab Combo Meter
with conductivity/temperature probe
& replaceable pH probe



Bluelab
Conductivity Pen
with conductivity/
temperature probe

Bluelab
Truncheon® Meter

EC crop values

Crop	EC	Crop	EC
African Violet	1.0 - 1.2	Lavender	1.0 - 1.4
Asparagus	1.4 - 1.8	Leek	1.6 - 2.0
Avocado Pear	1.8 - 2.6	Lettuce - Fancy	0.3 - 0.8
Balm	1.0 - 1.4	Lettuce - Iceberg	0.6 - 1.4
Banana	1.8 - 2.2	Melons	1.0 - 2.2
Basil	1.0 - 1.4	Mint	1.0 - 1.4
Beans	1.8 - 2.5	Mustard/Cress	1.2 - 2.4
Beetroot	1.4 - 2.2	Onion	1.8 - 2.2
Blueberry	1.8 - 2.0	Parsley	0.8 - 1.8
Borage	1.0 - 1.4	Passion fruit	1.6 - 2.4
Broccoli	1.4 - 2.4	Pea	1.4 - 1.8
Brussels Sprouts	1.8 - 2.4	Pumpkin	1.4 - 2.4
Cabbage	1.4 - 2.4	Radish	1.2 - 2.4
Capsicum	2.0 - 2.7	Rhubarb	1.6 - 2.0
Carrot	1.4 - 2.2	Roses	1.8 - 2.6
Cauliflower	1.4 - 2.4	Sage	1.0 - 1.6
Celery	1.5 - 2.4	Spinach	1.8 - 3.5
Chives	1.2 - 2.2	Silver beet	1.8 - 2.4
Cucumber	1.6 - 2.4	Squash	1.8 - 2.4
Dwarf Roses	1.6 - 2.6	Strawberry	1.8 - 2.5
Eggplant	1.8 - 2.2	Thyme	1.2 - 1.6
Endive	0.8 - 1.5	Tomato	2.2 - 2.8
Fennel	1.0 - 1.4	Turnip, Parsnip	1.8 - 2.4
Kohlrabi	1.8 - 2.2	Watercress	0.4 - 1.8

Temperature

Keep a close eye on this too

Extremes of temperature affect us. They affect plants too.

Temperature affects plant growth, flowering, seed production and pollination. And more than these.

If it's too cold, seeds won't germinate, cuttings won't root, flowers won't produce pollen. Your plants will grow slowly or stop growing altogether. Too hot, your seeds won't germinate and cuttings won't root. Plants can die from oxygen deficiency, or succumb to pathogens that like higher temperatures.

Prevent big temperature swings

In winter: Put a heat mat under your reservoir and/or use aquarium heaters for your nutrient.

In summer: Use chillers.

Protect your solution from direct sunlight: Insulate it or sink your reservoir in the ground.

If you can't prevent temperatures from rising too high: Lower plant stress levels by lowering the strength of your nutrient solution.

A warm, dry environment evaporates water quickly: Evaporation can cause big problems by increasing the concentration/conductivity of the nutrient solution.

Can't easily lower the temperature of your growing environment? Try covering your reservoir with black-and-white plastic (white side up, black side down). This will reflect light away and help prevent evaporation.

Reducing direct light on the solution will also slow or prevent the growth of algae and bacteria: If you're growing indoors, be aware of the heat from plant lamps. A slight change in a light's position can make a big difference to growth. Outdoors, or in a greenhouse, the amount of sunlight will affect the temperature of your growing environment.

no ifs or buts

Root health is vital

Control your nutrient solution temperature

Temperature affects the growth rate and structure of plants.

Most plants prefer a root zone temperature of 18-22°C (65-72°F).

(Cooler for winter crops, warmer for tropical crops.)

Keep your solution at around 20°C (68°F) for the best oxygen content and uptake by the roots.

High water temperature (above 22°C or 72°F) quickly reduces dissolved oxygen and increases the risk of root disease.

Cold water temperature can shock roots and cause other problems.

Adding water to your reservoir?

Get it to the same temperature as the root zone water before you start the pumps. Rapid changes to the temperature of the solution will stress plants.

Notes



Note down your temperatures to see if there are any trends:

pH measuring instruments

How do they work?

pH measuring instruments

They are scientific instruments so need to be used and handled correctly.

pH instruments need to be calibrated to laboratory standard solutions.

All Bluelab pH meters / monitors are calibrated to two points, most often in pH 7.0 and pH 4.0 calibration solutions.

Meters that say they only need calibrating to one point (which is normally 7) can be inaccurate, especially if they say they measure the full scale from 0.0–14.0. If the reading you expect is normally higher than pH 7.0, calibrate with pH 7.0 and pH 10.0 solutions.

pH instruments have pH probes that are either built into the instrument or are replaceable.

no ifs or buts

pH probes are fragile. Don't waste your investment.

Glass bulb pH probes can break. Treat them with care, and you'll get long service.

Don't touch the probe glass with your fingers – this will contaminate the probe, affecting performance.

Don't put sideways force on the electrode – this can break the glass stem.

Don't knock the probe against anything – it will damage the glassware.

A sudden temperature change can break the glassware – don't plunge a cold probe into a hot liquid.

Don't immerse in – oils, proteins, or suspended solids.

Don't kink the lead or bend sharply – the lead can't be lengthened.

You can submerge the probe in liquid – but don't submerge the BNC fitting.

Glassware is designed to stay wet – if it dries, it dies!

Clean glassware regularly and carefully – it's critical to product life.

Care instructions come with the product – please follow them.

factfile

How your pH meter/monitor works

It is an extremely sensitive volt meter which measures the pressure of electricity.

Pure water has no voltage at all but in acid or alkaline solutions there is a minute amount of electricity produced. It is too small to be measured by an ordinary volt meter. It works by taking a very small signal, multiplying it, adjusting it and then converting it to a pH level.

This is the reason why pH probes must be cared for as per the manufacturer's instructions and high quality calibration solutions are used.



pH measuring instruments

Bluelab Combo Meter
with conductivity/temperature probe
& replaceable pH probe



Bluelab Soil pH Meter
auger & replaceable soil pH probe



Bluelab pH Meter
with replaceable pH probe



Bluelab pH Pen
with built-in pH &
temperature probe



Bluelab
Soil pH Pen
with built-in pH probe &
removable storage cap/auger

Look after your pH probes

And they'll look after you

Caring for pH probes

Glass bulb pH probes are fragile. They won't last forever.

They'll age through normal use, and eventually fail. But a little attention to care can extend their lives.

We listed a few 'don'ts' in the previous section. Now let's see what you can 'do' in service and care.

Cleaning pH probes: keep them alive and accurate

When you buy a pH probe, you're buying a scientific instrument. You need to clean and calibrate it regularly. Do this, and you'll extend its life.

If your probe gets contaminated or dirty, it will lose accuracy.

So, again (something we repeat often), it's worth getting into the habit of cleaning then hydrating and calibrating your pH probe or pH pen.

Cleaning, hydrating and calibrating pH probes and meters: the 'whys'

- › To extend their life.
- › To ensure accuracy. Accuracy also depends on the solution quality, and on the age, use and cleanliness of the probe.

Cleaning and calibrating pH probes and meters: the 'whens'

- › If it's been a month since the last calibration.
- › When you get a reading you weren't expecting.
- › When the probe is new.
- › When you've done more than 30 readings.
- › When the meter is re-set after an error message.
- › When the successful calibration indicator disappears from the screen.
- › When batteries have been replaced.

no ifs or buts

pH probes need it wet. That's wet. Wet.

Keep your pH probe wet. If it dries, it dies!

pH probe glassware is designed to stay wet. You must keep it wet for optimal performance.

To ensure the best possible performance and lifespan of your pH probe, store and hydrate in BlueLab pH Probe KCl Storage Solution.

NOTE:
The reading is only as accurate as the probe is clean!



BlueLab pH Probe (replacement)

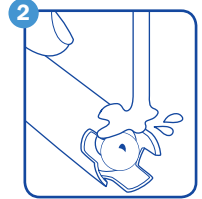
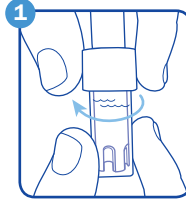


BlueLab Soil pH Probe (replacement)

How to clean a Bluelab pH probe

1 Remove storage cap from pH probe/pen.

For standard pH probes and soil pH probes: Hold the top of the storage cap, twist the cap to loosen then remove.
For the Bluelab pH Pen: Simply pull cap away from body.



2 Rinse pH probe tip under fresh tap water.

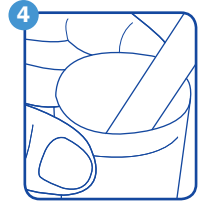
Never use distilled, Reverse Osmosis (RO) or de-ionized water.

3 Fill a small plastic container with clean tap water.

Add a small amount of Bluelab pH Probe Cleaner or mild detergent (dishwashing liquid).

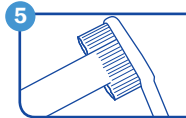
4 Gently stir the probe tip in the mixture.

Ensure that you do not 'knock' the pH probe/pen on the side of the container as this may cause damage to the probe.



5 If the probe tip requires removal of heavy contamination:

Dip a soft toothbrush in the Bluelab pH Probe Cleaner and water mix. Gently brush around the probe tip to remove contamination.



6 Rinse well under fresh running tap water to remove all traces of the detergent mixture.

7 Hydrate. The Bluelab pH Pen must be hydrated every month.

Pour enough Bluelab pH Probe KCl Storage Solution into a small plastic cup so it covers the probe tip. Submerge the probe tip in the solution. Leave to soak for 24 hours.

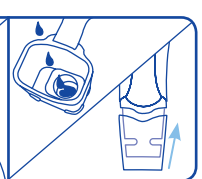
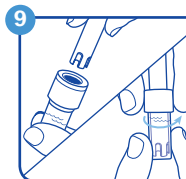
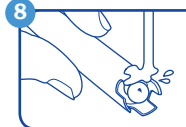
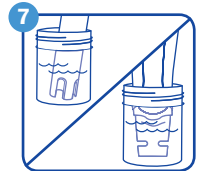
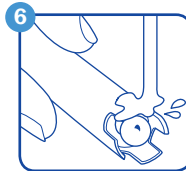
The pH probe needs to be hydrated only if it hasn't always been in KCl storage solution.

8 Rinse probe tip under tap water. Calibrate pH probe/pen. Instructions are on the back of the meter/pen, or go online to download a manual - www.getbluelab.com

9 Store probe in Bluelab pH Probe KCl Storage Solution.

For standard pH probes and soil pH probes: Place enough solution into the probe storage cap to fully submerge the pH probe tip. Place storage cap on probe.

For pH pens: Place 3 - 5 drops of solution into round hole of pH pen storage cap, weekly. Place storage cap onto pH Pen.



Look after your pH probes

And they'll look after you

Calibrating pH probes and meters: the 'hows'

It's not hard. It's very easy.

- › First clean the probe - refer to *cleaning instructions on page 25*.
- › Pour a small amount of pH 7.0 and 4.0 into two small plastic containers.
- › Place the probe into pH 7.0 solution, always 7 first. Long press calibrate button until calibration process starts. Release button.
- › '□' starts to flash indicating the start of calibration. Leave the probe in the solution while the display is flashing. After indicator stops flashing, display shows the calibration point is complete. (some meters differ – refer to the back of Bluelab meters or see the instruction manual).
- › Rinse the probe in fresh water.
- › Place the probe in pH 4.0 solution, Long press calibrate button until calibration process starts. Release button.
- › '□' starts to flash indicating the start of calibration. Leave the probe in the solution while the display is flashing. After indicator stops flashing, display shows the calibration point is complete.
- › Rinse the probe in fresh water.
- › **For Bluelab pH probes:** replace the storage cap, ensuring it contains enough Bluelab pH Probe KCl Storage Solution to cover the probe tip.
- › **For the Bluelab pH Pen:** place 3 - 5 drops of KCl storage solution into round hole of pH pen storage cap.

Storing pH probes

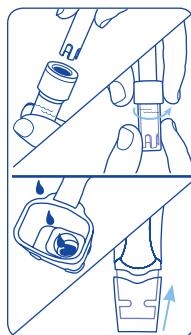
- › Glassware is designed to stay moist. Keep it wet for optimal performance.
- › Always rinse probes off after use with fresh tap water.
- › Add 3 - 5 drops of KCl storage solution into the round hole of the Bluelab pH Pen storage cap once a week. Place the storage cap on the pH probe.
- › To prepare the pH probe for storage, place enough Bluelab pH Probe KCl Storage Solution into the storage cap to cover the probe tip. Replace the cap and store in a secure place. Never use RO (Reverse Osmosis), distilled or de-ionized water to rinse or store the pH probe as it will cause permanent damage.
- › Long-term storage? Place the pH probe upright in a plastic cup. Cover the probe tip with KCl storage solution. Check every week. Top up the KCl storage solution level to ensure the probe tip is covered.
- › If your pH probe has been allowed to dry out, soak it in Bluelab pH Probe KCl Storage Solution (or fresh tap water) for 24 hours before use to re-hydrate it. BE WARNED; It may already be too late as the probe could have already suffered permanent damage.

pH probes

Calibrate your pH probe to the meter in pH 7.0 then pH 4.0 calibration solutions:



Store pH probes in KCl storage solution in the cap, ensuring the probe tip is submerged:



probe care equipment



pH Probe Care
all the tools to clean & test
your pH probe



pH & Conductivity Probe Care
all the tools to clean & calibrate your pH probe
and clean & test your conductivity probe



**Calibration and Conductivity
Standard Solutions**
available in pH 4.0, pH 7.0, 2.77 EC



**Bluelab pH Probe KCl
Storage Solution**
for hydration & storage of pH probes

Conductivity measuring instruments

How do they work?

Conductivity measuring instruments

How your EC or CF meter/monitor works

The principle is simple. The meter has two electrodes. A small current is sent from one electrode to another. It's how we measure the ability of the solution to conduct electricity.

The temperature of the nutrient solution can affect the accuracy of the reading. Bluelab's testers are factory calibrated and compensate for temperature variables. But sometimes you'll be taking a cold probe and putting it into a warmer nutrient solution or conductivity standard solution. Leave the probe in the solution for five minutes or so before taking the reading. That way the probe will reach the same temperature as the nutrient solution. You'll need to do this most often in winter.

no ifs or buts

Conductivity (EC/CF) probes require cleaning at least once a month.

This removes the build up from nutrient salts, ensuring better accuracy with your readings.

Always test the probe in a known solution after cleaning – such as Bluelab 2.77EC Conductivity Standard Solution

Only ever buy good brands of conductivity standards – and throw them away three months after opening.

Conductivity probes that read low need cleaning.

The shroud on the conductivity probe must always stay on the probe tip – except when cleaning, or the readings will be incorrect.

Avoid touching the probe face with your fingers – the oil from your skin will contaminate the probe.

Rinse the probe head in fresh tap water after each use – to reduce nutrient build up.

Care instructions come with the product – please follow them.

factfile

Some brands of meters have to be calibrated for conductivity.

Most of Bluelab's instruments do not need calibrating for conductivity. We like to keep it simple.

The Bluelab Conductivity Pen has an option to be calibrated.

Conductivity Standard Solutions can also be used to calibrate conductivity testers.

conductivity
measuring instruments



Bluelab
Truncheon® Meter



Bluelab Combo Meter
with conductivity/temperature probe
& replaceable pH probe



Bluelab
Conductivity Pen
with conductivity/
temperature probe

Conductivity measuring instruments

How do they work?

Caring for conductivity probes

Nutrient salts build up on the probe face over time.

We recommend cleaning your conductivity probe every 30 days to maintain the best accuracy with your readings.

Calibrating conductivity probes

- › Not required with Bluelab products. They are factory calibrated, so only require cleaning and testing.
- › The Bluelab Conductivity Pen can be calibrated, instructions are on the back of the meter. Remember to clean the probe first.

no ifs or buts

Keep the shroud on the probe at all times.

Avoid touching the probe face, the oils from your fingers contaminate the probe.

Clean the probe face and test every 30 days.

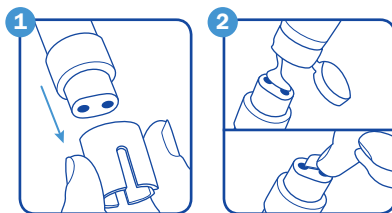
How to clean a Bluelab conductivity probe

1 Remove the shroud.

Warm the shroud in your hand for a few seconds to help with removal. Hold the body and pull the shroud off.

2 Clean the conductivity probe face.

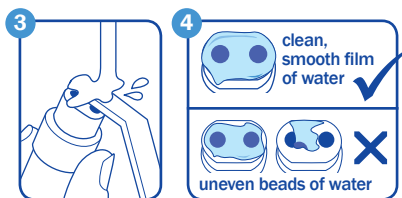
Place one or two drops of Bluelab Conductivity Probe Cleaner onto the probe face and rub with the Bluelab Chamois or your finger firmly and vigorously.



3 Rinse the conductivity probe face.

Rinse off all traces of cleaner under running tap water while scrubbing the probe face with the other side of the Bluelab Chamois or the same finger.

4 Check that the water forms a smooth film on the probe face. If you have beads of water, repeat steps 2 and 3.



5 Refit the shroud. Test in 2.77 EC solution to ensure the probe face has been cleaned adequately. Pour enough Bluelab 2.77 EC Conductivity Standard Solution into a small container to ensure the probe tip is covered.



6 Place the probe tip into the solution, wait for the reading to stabilize to a constant value. This can take a few minutes while the probe adjusts to the temperature of the solution.

7 Repeat the cleaning process if the reading given is not within: 0.1 EC of 2.8 EC, 1 CF of 28 CF, 50 ppm of 1385 ppm, 70 ppm of 1940 ppm.



factfile

The right care for your probes and meters will maximize their lifespan.

Keep your pH probe wet - if it dries, it dies.

Every 30 days ensure your pH probe is:

- cleaned
- hydrated in KCl
- calibrated to 2 points

Do not drop, knock or exert a sideways force on your pH probe.

Rinse probes in fresh tap water between each measurement and after use.

Clean your conductivity probe every 30 days.

Keep your meter in a cool, dry, clean place - out of direct sunlight.

Bluelab Carry Case

The perfect way to store your Bluelab meter or pens:



Storing solutions

- › Use Bluelab calibration solutions and conductivity standards. They're manufactured specifically for the purpose and they're referenced to high laboratory standards.
- › Store the solutions with the cap on firmly to prevent evaporation.
- › Store them in a cool place out of direct heat and sunlight.
- › Replace the solutions three months after opening.
- › DO NOT take a reading directly from the bottle. You'll get contamination and have to discard the whole bottle.

Storing meters

- › Keep meters out of direct sunlight. It can cause irreparable damage to the LCD display.
- › Store in a cool, dry, clean place - when not in use.
- › If the meter you use isn't waterproof and it's splashed with water, wipe it dry ASAP.
- › Put enough Bluelab pH Probe KCl storage solution (or fresh water) in the probe storage cap to cover the probe tip (as under 'storing probes' on page 28). For the Bluelab pH Pen, 3 - 5 drops in the round hole of the storage cap will do.
- › If you're storing for longer than 2-3 weeks, remove the pH probe from the meter's BNC fitting and place it in the solution described above. Then put it in a secure place.
- › Take out the batteries to avoid any leakage if storing for a long period.

Batteries

- › Don't mix brands or types and don't mix old with new.
- › Check for corrosion at least every six months. Batteries that have been in the unit for a long time may corrode. If you find signs of corrosion - clean the contacts immediately.
- › If you have a meter with a twist on the battery cap, make sure it's on tight to keep it waterproof.
- › Remove batteries if you are storing your meter for long periods of time.

Knowledge base

Words and ideas that create value

Acid A chemical substance that unites with an alkali base to form a salt. An acidic solution has a 'low' pH – below 7.0 pH. Phosphoric and nitric acid are used to lower the pH value of a nutrient solution.

Actual value Refers to the present EC (Electrical Conductivity), pH and temperature within the hydroponic system.

Additive Specialist materials added to the nutrient solution in order to enhance some aspect of plant growth or system operation, eg OGP, potassium silicate.

Aeration Introducing air to the growing media and/or nutrient solution to provide adequate oxygen for plant root zones. See 'Oxygenation'.

Agitation Mixing or aerating nutrients – generally in the holding tank by means of a pressurized jet of nutrient or via a stream of air introduced by a venturi.

Air movement Essential to all growing. Air movement supplies carbon dioxide (CO₂) to the plants for the function of photosynthesis.

Alarms Automatic protection systems to alert the grower of an undesirable growing situation.

Alkali A soluble chemical substance which, when mixed with an acid, produces a salt. An alkali has a high pH, being above 7.0 pH. Potassium hydroxide (caustic potash) is the alkali used in hydroponics for raising the pH value of nutrient.

Alkalinity The alkaline concentration of a nutrient solution.

Ambient Refers to the current surrounding area, such as 'ambient temperature'.

Anion A negatively charged ion – one of the basic building blocks of nutrient solutions. See also 'Cation'.

Aqueous concentrate Nutrients or other chemicals dissolved in water to form stock solutions.

Artificial lighting Electric light-bulbs and tubes used to replace or supplement the energy normally provided by the sun for photosynthesis.

Atmosphere The quality of the air or climate in a growing area.

Automatic Any device or process operating independently of the grower.

Backup systems Emergency control, power or water supplies in case of failure of normal mains supplies.

Bacteria Micro-organisms, usually single-celled, occurring in a wide variety of forms. Usually found as free-living saprophytes, bringing about natural decomposition, or parasites, many of which cause disease.

Ballast An electrical device that starts and regulates fluorescent and discharge lamps.

Ball cock A float-operated water valve allowing automatic replenishment of water levels in holding tanks (also used in toilet cisterns, etc).

Batching Mixing a volume of ready-to-use nutrient solution.

Bleach Common household bleaches can be used to disinfect growing systems.

Bloom The flowers or blossoms of a plant.

Blue-print temperature The most desirable temperature for promoting growth and good health for a particular crop type.

Bolt Rapid stretching or going-to-seed prematurely of a plant, exacerbated by low light and/or undesirable temperature conditions.

Bottom heat Providing heat beneath a growing container to promote root growth over top growth.

Bottom watering Providing nutrient to the base of a container to allow capillary action for the plant's requirements.

Bud The protuberance on a plant stem which contains the undeveloped shoot, leaf or flower.

Buffer A solution that maintains the relative concentrations of hydrogen and hydroxyl ions by neutralizing, within limits, added acids or alkalis - ie producing a pH-stable nutrient.

Buffer solution A stable solution of known pH value used to calibrate pH meters.

Burn Often called 'tip burn', usually caused by too high a conductivity level, resulting in cell death occurring at the leaf tips and margins.

Calibration Adjusting meters and controls to known standards.

Canopy The top growth of a plant, receiving most of the available light.

Carbonic Acid A weak acid, H_2CO_3 formed in solution when carbon dioxide is dissolved in water. $CO_2 + H_2O > H_2CO_3$.

Catchment Describes the drainage installation in a hydroponic system.

Cation A positively charged ion – the opposite to anion (see '*Anion*'). Basic to nutrients and the way in which plants can absorb them.

Centigrade A measurement of temperature. Freezing point at sea level equals zero degrees and boiling point at sea level equals 100 degrees.

CF (conductivity factor) A scale of conductivity often used in Australia and New Zealand.

Channel See 'NFT gully'.

Chlorine An oxidizing chemical used to sanitize water supplies and systems.

Colorimetric A method of measuring chemical values. A chemical will turn a certain color when brought into contact with the chemical of interest. Colorimetric tape can be used to measure the general pH value of a nutrient solution.

Condensation The process of water vapor turning into water droplets.

Conductivity An electrical measurement of the total soluble salts contained within a solution. See *page 17*.

Conductivity meter Measures the electrical conductivity of a solution.

Contaminate (contamination) To make impure or to corrupt by exposing to some other unwanted chemical or agent.

Deficiencies Poor plant health or low productivity caused through too low a concentration, or the unavailability, of an essential mineral element.

De-ionization Removal of all foreign ions in water - ie removal of impurities by distillation.

Knowledge base

Words and ideas that create value

Desired value The nutrient EC, pH and/or temperature values required by a grower, set on an automatic dosing controller.

Dose (dosing) Adding concentrated nutrient mixes, or pH correctors, to return the nutrient contents of the growing system to the desired values.

Dose 'on' time The length of time dosing is allowed by the controller.

Dose 'off' time The length of 'standby' (dosing stopped) time, allowing materials to mix in the tank before dosing recommences.

Dosing bin A device to meter out a nutrient concentrate to a growing system.

Dosing systems Automatically monitor the status of nutrient in a growing system, and add new supplies of nutrient concentrates or pH correctors as required, to maintain the desired nutrient values.

EC (electrical conductivity) Pure or distilled water has no electrical conductivity. Added minerals (dissolved salts) create electrical conductivity. Measured by several different systems. See [page 16](#).

Fahrenheit A measurement of temperature. Freezing point at sea level equals 32 degrees and boiling point at sea level equals 212 degrees. Largely used in the US and, to a lesser extent, in the UK.

Fertilizer – nutrient In conventional growing the materials used for feeding plants are generally referred to as fertilizers. These may not be readily soluble. In hydroponics we refer to them as nutrients, and all constituent parts of the formula must be 100% soluble in water.

Float switch Measures liquid level. When operated sends a signal to other equipment, ie a fresh-water make-up valve.

Float valve See '[Ball cock](#)'.

Flushing Periodically washing out growing beds and systems with fresh water.

Formula Recipe for a mixture of several nutrient elements.

Humidity Measures water vapor in the air.

Hybrid A new variety of plant produced by combining plants of different genetic make-up.

Hydroponics The art of soil-less cultivation.

Irradiation level The intensity of artificial light required by a plant for effective photosynthesis.

Jif Trade name of a domestic liquid scouring preparation used for cleaning porcelain and enamel products, similar to 'soft scrub' in the US. Used for cleaning the surface of measuring probes.

Light The essential energy that provides for plant growth.

Lock-up If your nutrient solution is too acidic or too alkaline it can cause 'lock-up', restricting certain elements essential for growth from being absorbed by the root structure.

Major elements (macro-elements) The major elements for plant growth, including nitrogen, calcium, potassium, phosphorus, magnesium, iron and sulfur. See [page 6](#).

NFT – nutrient film technique (also 'gully') Hydroponic growing system, with plants bare-rooted into a gully through which a thin film of nutrient solution flows.

Nitric acid A dangerous acid to use. Take extreme care and use only when additional nitrogen is required in the formula without the addition of any other element.

Nutrient tank Usually the main holding and nutrient status adjustment tank within a hydroponic system.

Oxygen (oxygenation) Essential for all living things. Oxygen is produced by plants as a by-product of photosynthesis. An essential gas for the root zone of all plants.

Parts per million (ppm) Scientific measurement of chemicals within a solution. See 'ppm'.

pH value The measurement of acidity (below 7.0 pH) or alkalinity (above 7.0 pH) of a solution. See *page 10*.

Peristaltic pump Moves liquid by mechanically squeezing a flexible tube and pushing liquid along the inside of the tube.

Phosphoric acid The preferred acid for use in pH correction of nutrient solutions.

ppm (parts per million) Not a true measure when measuring the conductivity of a nutrient solution. ppm has many different scales. BlueLab products use 500 (TDS) and 700 scales for those reluctant to change to EC. Calculate ppm by multiplying EC by the scale required, eg $2.5 \text{ EC} \times 500 = 1250 \text{ ppm}$. See *page 16*.

Probe conductivity and pH probe Purpose-designed probes for immersion into the nutrient to take measurements.

Reservoir A nutrient or water-holding tank.

Shroud The protective (and essential) vented cover fitted to the tip of an EC probe.

Slope pH Term used when calibrating a pH meter to values either side of 7.0 pH.

Stock solution The A and B (2 part) liquid nutrient concentrates used for addition by a dosing system to maintain a growing system's desired nutrient values.

Suspended solids Solid particles of matter contained within water or nutrient – can be removed by filtration.

TDS (total dissolved solids) The total content of inorganic materials dissolved into water – often incorrectly used as a measure of the strength of nutrient solution. Nutrient strength should always be measured with a conductivity meter. TDS also stands for the 500 ppm scale.

Temperature differential The difference between temperatures – generally referring to temperatures between the inside and outside of a heat exchange tube, or the inside and outside of the walls of a greenhouse, etc.

Total dissolved solids See 'TDS'.

Venturi A passive device that is used in hydroponics to inject air (oxygen) into the nutrient solution.

Everything you need, nothing you don't.

We hope you have found our Grow Book to be a valuable tool for your pursuit of the perfect crop.

We are open to any questions or feedback you may have.

We want to ensure that the Grow Book remains relevant and provides all the information that will support a new or experienced grower.

Please contact us with any suggestions, eureka moments or examples of your experiences / learning's with your feed system so we can share these with other readers so they may learn from your wrongs or rights.

Simply email them to support@bluelab.com

The Grow Book.

First published in 2015 by Bluelab® Corporation Limited

8 Whiore Avenue, Tauriko Business Estate,
Tauranga 3110, New Zealand

© **2017:** Text, design and photography
copyright to Bluelab® Corporation Limited.

All rights reserved. No part of this publication may be reproduced, stored in a retrieval system, or transmitted in any form, or by any means electronic, mechanical, photocopying, recording or otherwise, without the prior written permission of the copyright holders.







learn more
do more
get more
success by simplicity



Let's Talk

If you need assistance or advice, we're here to help.

- 📞 North America 1-855-525-8352
- 📞 Rest of World +64 7 578 0849
- ✉ support@bluelab.com
- 📘 facebook.com/getbluelab



© Copyright 2017, all rights reserved, Bluelab® Corporation Limited GROWBOOK_V02_310817



Post

Bluelab® Corporation Limited
8 Whiore Avenue
Tauriko Business Estate
Tauranga 3110
New Zealand



Limited Written Guarantee

The Bluelab® product range all come with a limited written guarantee. Proof of purchase required.