


Pot Divider



MULTIPLY PLANT COUNT WITHOUT INCREASING SYSTEM SIZE

PERFECT FOR PRE-VEG STAGE & TIGHT-LEAVED VARIETIES

ALLOWS EACH POT TO HOLD FOUR PLANTS



Fits 8.5 L / 2.2 gal & 15 L / 3.9 gal pots as used in 1Pot & easy2grow modules (easy2grow pictured above)



Fits 8.5 L / 2.2 gal & 15 L / 3.9 gal pots as used in Auto8 modules (pictured above)

USA / CANADA

REST OF WORLD



 @AUTOPOT_GLOBAL

 @AUTOPOTSYSYSTEMS

AutoPotTM
WATERING SYSTEMS

 AUTOPOT.CO.UK

 @AUTOPOTUK



POTDIVIDER BASE REMOVES THE NEED FOR PEBBLE BASE LAYER

LIFTS OUT CLEANLY BRINGING PLANTS WITH IT - FOR EASY REPOTTING

FITS 8.5 L / 2.2 GAL POTS & 15 L / 3.9 GAL POTS

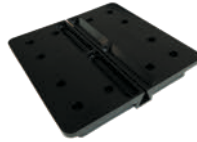
COMPATIBLE WITH:

- AutoPot 8.5 L / 2.2 gal Pots
- AutoPot 15 L / 3.9 gal Pots

POTS AS USED IN:

- easy2grow Modules
- Auto8 Modules
- 1Pot Modules

CONTENTS:



1x PotDivider Base



1x Bottom Divider



1x Top Divider



1

Prepare your pots with root control as usual.

Put marix or root control discs (not supplied) into your 8.5L / 2.2 gal or 15 L / 3.9 gal pots (not supplied).



2

To assemble PotDivider take the Bottom Divider (see Contents above) and slide into the guide on the Base.



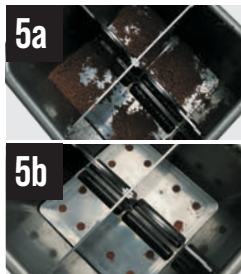
3

Take the Top Divider (see Contents above) and slot down into the slot in the Bottom Divider using the guides to create a cross-shape.



4

Place the assembled PotDivider into your 8.5 L / 2.2 gal or 15 L / 3.9 gal pot.



5a

Pour a small amount of medium into each section of the PotDivider [5a].

5b

Push the medium down through holes in the Base [5b] - **this is essential for capillary action to occur.**



6

Fill pots with medium and pot up plants. Water through pots and allow to drain outside the tray. Once drained place pots into your module trays.